



BATLIBOI

SUBMERSIBLE AND MONOSET PUMP

IS-8034



cml-7083974



COMPANY'S PROFILE.....

The company was originally established in the year of 1992. When the company was manufacturing of various types of submersible pumps.

BATLIBOI, an IS - 8034: 2002 & ISO - 9001:2000 certified company is a professionally managed company with the objective of manufacturing and marketing of superior quality submersible pumps to meet the requirement of our customers in India and abroad. The Company's product range include V-6, V-7 (V6 to V7), V-8 & horizontal monoset (open well).

A young team of technocrats, who are well educated and experienced, in the business of submersible and monoset pumps, owns the company.

We are make sure quality take with our moreover due to vast experience of the engineers and skilled staff in the field of submersible pump. We have facility of latest technology in testing and production with sufficient skillful worker and staff. We are also developed new varieties and design in requirement of field in fresh time.

The product undergoes stringent quality control tests at every stage of manufacturing which ensure it to be hundred percent defects free when sent to dealers and in turn supplied to customers. The company also provides prompt and in time after sales services to its customers through its dealer network.

We are supplied our pumps to various Government / semi Govt. Department, industries, privates, public sectors and agriculture. All customers are fully satisfied with pump performance. We have nation wide marketing and distribution network and we are planning to go global in near futures.

OUR QUALITY POLICY :

BATLIBOI is aim to achieve total customer satisfaction through manufacture & supply of quality products, which are delivered on time and technically supported.

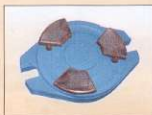
We are committed to continual improvement in all aspects of business by establishing and maintaining quality management system conforming to ISO 9001:2000 international standard and also commit to fulfill all applicable statutory and regulatory requirement.

OUR PRODUCT RANGE :

1. 4" Submersible pumps (1Ø&3Ø)	HP up to : 5 Head up to : 150 mtrs Discharge up to : 260 LPM
2. 6" Submersible pumps	HP up to : 25 Head up to : 260 mtrs Discharge up to : 1150 LPM
3. 7" Submersible pumps	HP up to : 15 Head up to : 80 mtrs Discharge up to : 1700 LPM
4. 8" Submersible pumps	HP up to : 60 Head up to : 220 mtrs Discharge up to : 2150 LPM
5. Horizontal Monoset for Open well (3 Phase) (Ø137, Ø180 & Ø184)	HP up to : 10 Head up to : 60 mtrs Discharge up to : 2000 LPM
6. Horizontal Monoset (Domestic Pumps) (1Ø & 3 Ø)	HP up to : 2 Head up to : 30 mtrs Discharge up to : 500 LPM
7. 6" Submersible Pumps Well having Capacity of 45 feet / stage	HP up to : 25 Head up to : 300 mtrs Discharge up to : 500 LPM

We have developed submersible motors with shorter length (Ø137 stamping) resulting higher efficiency and robust physic. Our project for latest pump design is on the anvil accepted in the market within this year suitable for 6" bore well which will have operating head range of 500' to 600' feet. In fact pumps are tailor made item for which we share the responsibility of any specific duty and material of composition.

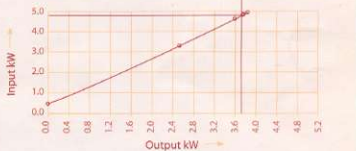
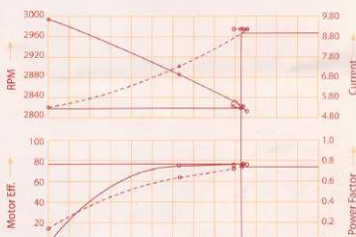
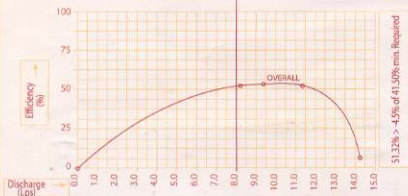
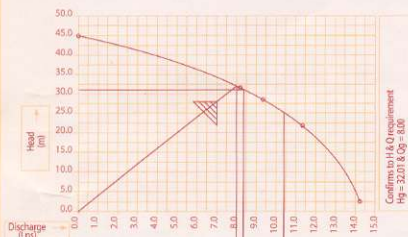
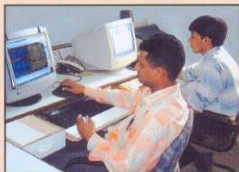
We have some many models of pump sets with ISI (IS-8034) mark in 6" & 8" well ranging from 3 HP to 60 HP.



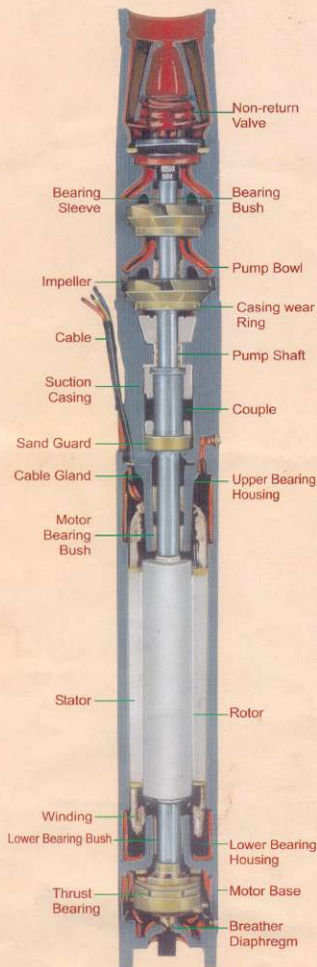


BATLIBOI

SUBMERSIBLE AND MONOSET PUMP



SECTIONAL VIEW



SALIENT FEATURES

- Requires very little space.
- Eliminates the need for elaborate foundations and pumphouse arrangements.
- Noiseless running of the motor.
- Economy in operation due to high overall efficiency.
- Can be installed in difficult sites-in narrow curved or slanting boreholes or in confined conditions.
- Easy installation and removal, especially in deep boreholes.
- Suitable for sites where a pumphouse is not desired or cannot be built.
- Pumping system can be made fully automatic.
- Very Sturdy motor, insensitive to voltage fluctuation, unlike normal electric motors.
- Reduced H.P. Losses due to transmission.
- No contamination of water by oil or grease.

APPLICATIONS

- Borewell, openwell, reservoir and river beds.
- Domestic, Industrial & Rural Water Supply Scheme.
- Irrigation schemes.
- Drip Irrigation schemes.
- Sprinkler Irrigation System.
- Highrise buildings.
- Small Scale Industries.
- Fountains.
- Dairies.
- Stud Farms.
- Bungalows, Housing Colonies.

BATLIBOI Submersible Pumpsets are available

For 100 mm to 200 mm dia borewells from 0.5 HP to 75 HP for various head & Discharge.

NOTE : We also supply

Pumps with special material of construction Such as Stainless Steel, Al, Bronze, Nickel Cast Iron etc. For pumping sea, water, Minewater salty, muddy & sandy water.

Manufactured by :



BATLIBOI
SUBMERSIBLE AND MONOSET PUMP